

VARIABLE HEIGHT ADJUSTABLE TWO PERSON 1500 WORKBENCH



TECHNICAL SPECIFICATION

Dimensions (L x D x H)	1500 x 760 x 860 mm
Worktop	Solid beech cleated and drawbolted top
Frame Material	Steel - Adjustable Height
Vices Supplied	2 x 7" Heavy Duty Woodworking Vices fitted with Vice Fixing Kits
Underbench Cupboards	No

DESCRIPTION

The variable height two person 1500 workbench is a heavy duty workbench suitable for all woodwork and metalwork activities.

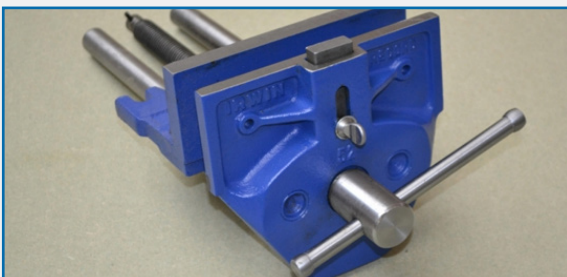
This bench will be supplied with a solid beech top and adjustable steel frame support.

AES can provide these benches fitted with 7" Heavy Duty Woodworking vices suitable for all curriculum and project requirements in an educational environment.

WORKHOLDING EQUIPMENT

The Workbench will be supplied with 7" Heavy Duty Woodworking vices pre-fitted to the bench top and faced with suitable wooden fixtures.

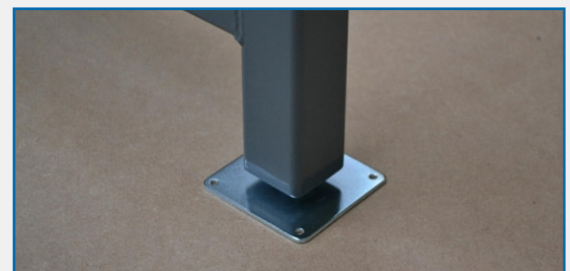
This is the ideal vice to tackle any educational project or material in the workshop.



7" Woodworking Vice
(Without Fixing Kit)

OPTIONS

- Levelling feet (pictured below)
- Height adjustable legs
- Multi plywood shelf (for inside storage cabinet)
- Vice fixing kits (if not fitted)
- Vice tray (for placing a metalworking vice within the woodworking fixing - pictured below)
- Bench hook
- Foot stands
- Octagonal cover tops
- Sacrificial cover top
- MDF cover tops



Optional - Levelling Feet



Optional - Vice Tray for
Metalworking Vice

AES OFFER INSTALLATION AND SERVICE SUPPORT FOR ALL EQUIPMENT