

## FOUR PERSON 1220 WORKBENCH WITH TIMBER FRAME AND CUPBOARDS



### TECHNICAL SPECIFICATION

Dimensions (L x D x H)	1220 x 1220 x 860 mm
Worktop	Solid beech cleated and drawbolted top
Frame Material	Solid Braced Beech
Vices Supplied	4 x 7" Heavy Duty Woodworking Vices fitted with Vice Fixing Kits
Underbench Cupboards	Yes
No. of Doors	2
Cupboard Door Material	Birch manufactured board

### DESCRIPTION

The 1220 CU Workbench is a heavy duty workbench suitable for all woodwork and metalwork activities.

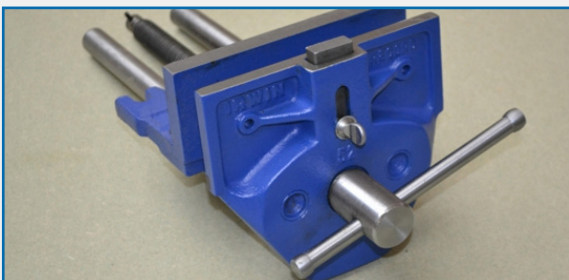
This bench will be supplied with a solid beech top and underbench storage cabinets. The underbench storage cabinets will be manufactured in birch wooden board and have two access doors opposite on two sides of the square bench.

AES will also provide these benches fitted with 7" Heavy Duty Woodworking vices suitable for all curriculum and project requirements in an educational environment.

### WORKHOLDING EQUIPMENT

The Workbench will be supplied with 7" Heavy Duty Woodworking vices pre-fitted to the bench top and faced with suitable wooden fixtures.

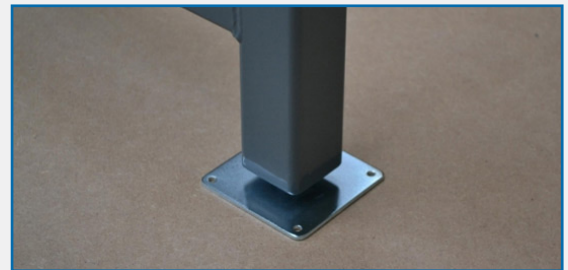
This is the ideal vice to tackle any educational project or material in the workshop.



7" Woodworking Vice  
(Without Fixing Kit)

### OPTIONS

- Levelling feet (pictured below)
- Height adjustable legs
- Multi plywood shelf (for inside storage cabinet)
- Vice fixing kits (if not fitted)
- Vice tray (for placing a metalworking vice within the woodworking fixing - pictured below)
- Bench hook
- Foot stands
- Octagonal cover tops
- Sacrificial cover top
- MDF cover tops



**Optional** - Levelling Feet



**Optional** - Vice Tray for  
Metalworking Vice

AES OFFER INSTALLATION AND SERVICE SUPPORT FOR ALL EQUIPMENT