

BOFA V600 SOLDER FUME EXTRACTION UNIT



DESCRIPTION

The Bofa V600 is a centralised fume extraction system for solder applications. This high end range unit combines a large filter capacity with high airflows and pressure.

The V600 high volume extraction system offers protection against harmful fumes.

This unit incorporates 3 stage filtration, filter condition display, and built in silencing. A truly state of the art fume purification solution.

TECHNICAL SPECIFICATION

Dimensions (LxWxH)	465 x 405 x 590 mm
Cabinet Construction	Powder Coated Mild Steel
Airflow / Pressure	350 m ³ /h - 96 mbar
Electrical Data	90 - 257 V - Single Phase 50/60 Hz - 1.1 kW Full load current: 12.5 amps
Noise Level	<60 dB(A) (at typical operating speed)
Weight	35 kg
Approvals	UKCA and CE

DEEPPLEAT PRE FILTER SPECIFICATIONS

Surface Media Area	6 m ² approx.
Filter Media	Borosilicate
Filter Media Construction	Pleated
Filter Efficiency	F8 (95 % @ 0.9 microns)

COMBINED FILTER SPECIFICATIONS

HEPA Filter Media	Borosilicate
HEPA Media Construction	Maxi pleat construction with glue bead spacers
Gas Filter	Treated Activated Carbon
Filter Housing	Zintec Mild Steel
Treated Activated Carbon	7.5 kg
Filter Efficiency	99.997 % @ 0.3 microns

SPECIFICATIONS

Maximum number of 32 mm arms	6
Maximum number of 50 mm arms, cowls or down draft trays	4
Maximum number of 75 mm arms, cowls or down draft trays	2
(Dependent on installation)	

V600 EXTRACTION UNIT PART CODES

V600 - 90-257 V	E1142A0000
V600 - 90-257 V + VOC Sensor	E1142A0002
V600 - 90-257 V + 24V Stop/Start, Filter Condition Signal	E1142A0003
V600 - 90-257 V + 24V Stop/Start, Filter Condition Signal, VOC Sensor	E1142A0004

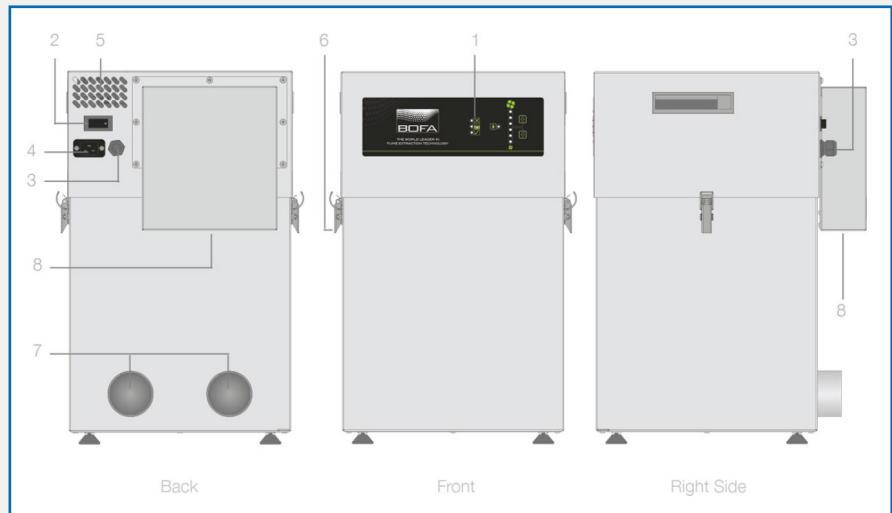
REPLACEMENT FILTERS

V600 - DeepPleat Pre Filter	A1030119
V600 - Combined Filter	A1030118

AES OFFER INSTALLATION AND SERVICE SUPPORT FOR ALL EQUIPMENT

BOFA V600 SOLDER FUME EXTRACTION UNIT

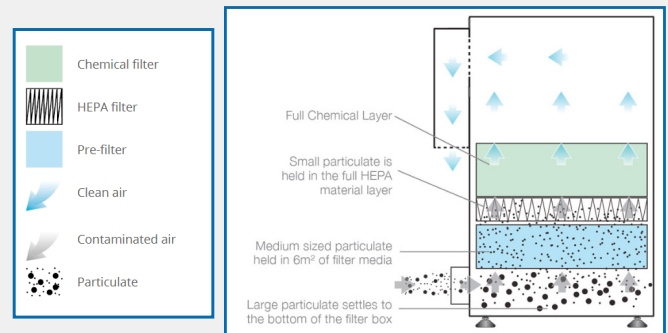
1. Filter condition display
2. On / off switch
3. Signal / interface cable
4. Power cable inlet
5. Motor cooling inlet
6. Filter latch
7. Hose inlet connection - 75 mm x 2
8. Exhaust outlet



FEATURES

- Blower with High Airflow and Pressure
- Digital Speed Control
- Filter Condition Display
- Long life filters with low replacement costs
- Filter change/System fail signal (Optional)
- 3 Stage Filtration
- Built in Silencing
- Remote Stop/Start Interface (Optional)
- DeepPleat pre-filter

V600 FILTRATION PROCESS



FILTER MAINTENANCE

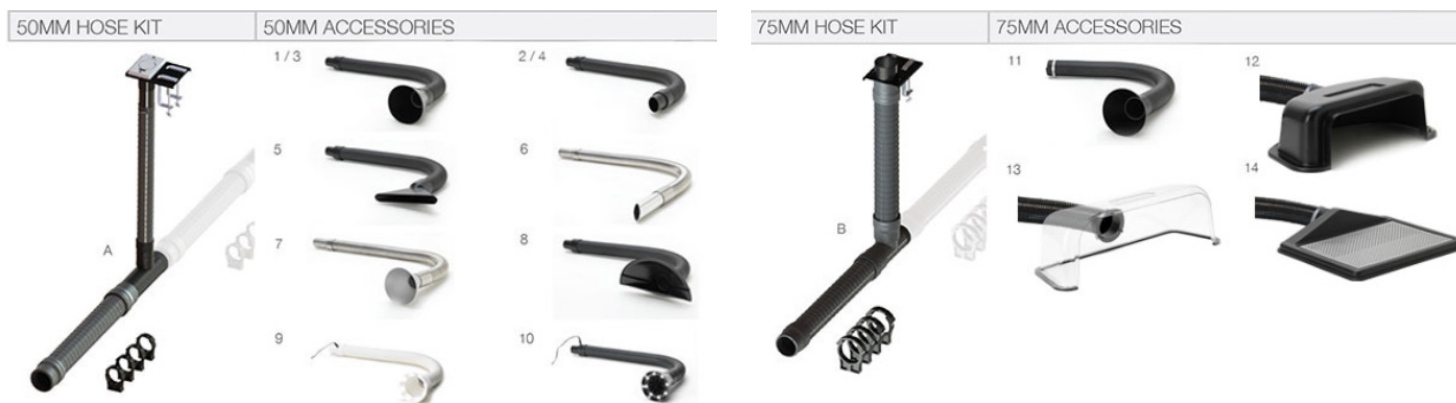
Bofa recommends:

- Filters are changed every 12 months, or sooner should the extraction unit begin to warn you.
- Only use official BOFA filters as they are made to the highest standards.
- If you can smell the process is not being collected in the filter, then the carbon could be saturated. If this happens, you must replace the combined filter.
- If the extractor filter light illuminates, first change the pre filter. If it is still illuminated, then change the combined filter. BOFA units with the iQ technology will give you independent filter monitoring to report on the status of both pre filter and combined (main) filter.



AES OFFER INSTALLATION AND SERVICE SUPPORT FOR ALL EQUIPMENT

BOFA V600 SOLDER FUME EXTRACTION UNIT



HOSE KIT - ONE PER BENCH NEEDED IF ORDERING FROM THE TABLE BELOW

Letter Reference	Description	Main items	Part Number
A (50 mm)	Hose kit to connect each bench for 50 mm arm/accessory.	50 mm to 75 mm "T" piece, 75 mm x 2.5 m flexible hose, 1 m x 50 mm flexible hose.	A1020376
B (75 mm)	Hose kit to connect each bench for 75 mm arm/accessory.	75 mm "T" piece, 2 x 75 mm x 2.5 m flexible hose.	A1020375

50 mm ACCESSORIES

Used with hose kit ref.	Number reference	Description	Part Number
A (50 mm)	1	32 mm ESD stay put arm with funnel	A1020044
A (50 mm)	2	32 mm ESD stay put arm with nozzle	A1020046
A (50 mm)	3	50 mm ESD stay put arm with funnel	A1020045
A (50 mm)	4	50 mm ESD stay put arm with nozzle	A1020047
A (50 mm)	5	50 mm ESD stay put arm with slot	A1020049
A (50 mm)	6	38 mm stainless steel ESD stay put arm with nozzle	A1020160
A (50 mm)	7	38 mm stainless steel ESD stay put arm with funnel	A1020184
A (50 mm)	8	50 mm ESD stay put arm with plenum funnel	A1020179
A (50 mm)	9	Light arm - white	A1020168
A (50 mm)	10	Light arm - black	A1020169

75 mm ACCESSORIES

Used with hose kit ref.	Number reference	Description	Part Number
B (75 mm)	11	75 mm ESD stay put arm 1m with funnel	A1020042
B (75 mm)	12	75 mm ESD cowl (black)	A1020039
B (75 mm)	13	75 mm clear cowl	A1020038
B (75 mm)	14	75 mm ESD down draft tray	A1020041

AES OFFER INSTALLATION AND SERVICE SUPPORT FOR ALL EQUIPMENT