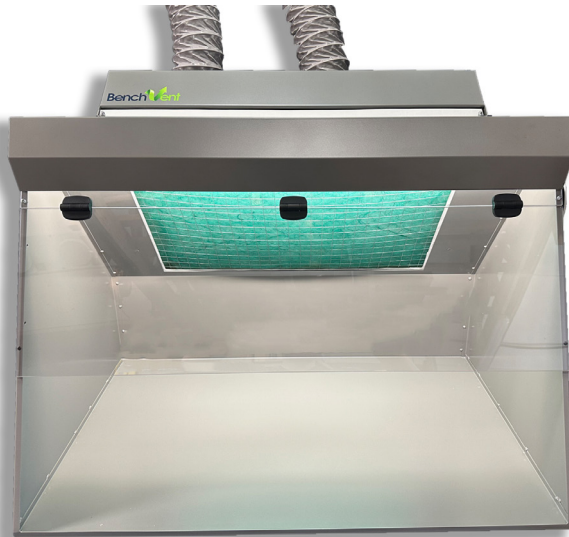


## BV930H-D DUCTED FILTRATION CABINET



### TECHNICAL SPECIFICATION

Overall Dimensions (L x D x H)	960 x 720 x 740 mm
Internal Dimensions (L x D x H)	960 x 620 x 660 mm
Weight	125 kg
Fan Motor Spec.	230 V 50 Hz, 210 W
Air Volume	710 m <sup>3</sup> /hr
Average Air Velocity @ Filter Face	0.60 m/sec
Average Air Velocity @ Hood Face	0.55 m/sec
Filters	Standard Particle Filter - IFA2P
Noise Level	60 db(A)

### DESCRIPTION

The BenchVent BV930H-D is a large ducted hood mounted local extraction cabinet designed specifically for laboratories. It is commonly used in dental & medical labs, pharmaceutical laboratories, research & development and school science laboratories.

This unit exhaust air through a flexi-duct externally to the atmosphere. Although, it's a ducted fume extractor, you do not need to have a special vent to use the BV930H-D. Its flexi-ducts can be fitted to a normal domestic vent or placed on a partially opened window. (We would recommend either one hole per duct or, if combining into one outlet, the outlet should be 150mm diameter.)

### FILTRATION

The particulate filter is a three stage graduated fibre filter with a high "dust" holding capacity for long life. Filtration to 5 micron particles. NB: Spray particulate sizes vary from 10 to 20 microns. The dual process of filtration and then extraction to atmosphere via flexi-duct, vastly reduces and/or eliminates operator exposures to potentially hazardous substances.

### CONSTRUCTION

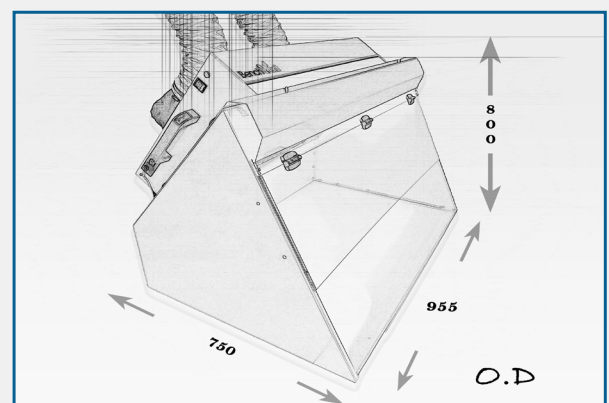
- Steel construction finished in dove grey
- Fan/filter unit mounted onto hood enclosure complete with clear polycarbonate panel and hood lighting
- Particulate filter
- 2 x centrifugal blowers, external rotor motor type, brushless
- UL, VDE & CSA approved
- Sealed electrical wiring and switch, downstream filters.
- Flexi-ducts; 2 metres x 100mm dia.

### OPERATION

The BV930H-D provides operators with a safe workstation, as handling of all the potential harmful chemicals is done within the hood enclosure in front of the intake filter area. For artwork applications, the enclosure can accommodate as standard A1 drawing boards, which will fit at an angle so the unit captures the over-spray efficiently, keeping the surrounding working area clean.

The BV930H-D fume cabinet is designed for immediate operator protection. The flexi-duct can be fixed to a standard domestic vent or simply placed through a partially open window to facilitate portability and/or convenience. All WS filtration and extraction systems carry a lifetime warranty, are quiet in operation and can be assembled in seconds. Place onto a desk, bench or trolley and then simply plug in and switch on.

### DIMENSIONS



AES OFFER INSTALLATION AND SERVICE SUPPORT FOR ALL EQUIPMENT