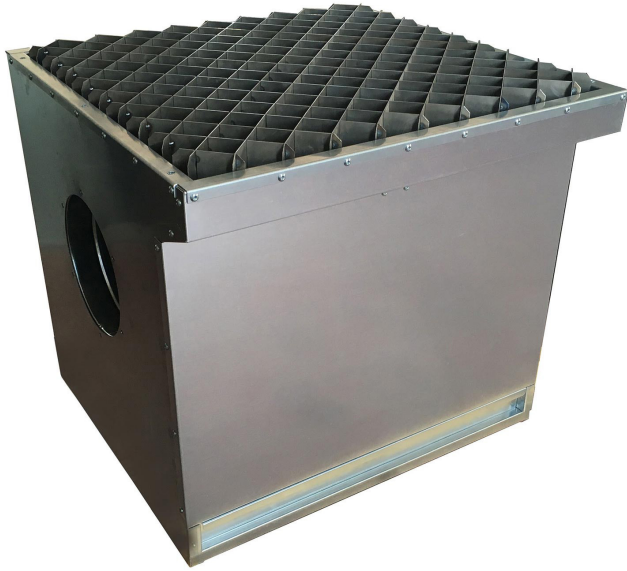


## AES PLASMA DOWNDRAFT BENCH



### DESCRIPTION

The AES series of plasma cutting downdraft benches are supplied **without fan or filters and** are fitted with a specific plasma cutting work surface for connection via Ø300mm outlet to a centralised extraction system or a separate fan/filter unit.

The benches are available in 4 lengths with a Maximum Load bearing of 150 kg/m<sup>2</sup> (upgradeable) and include a drawer to collect heavier particles.

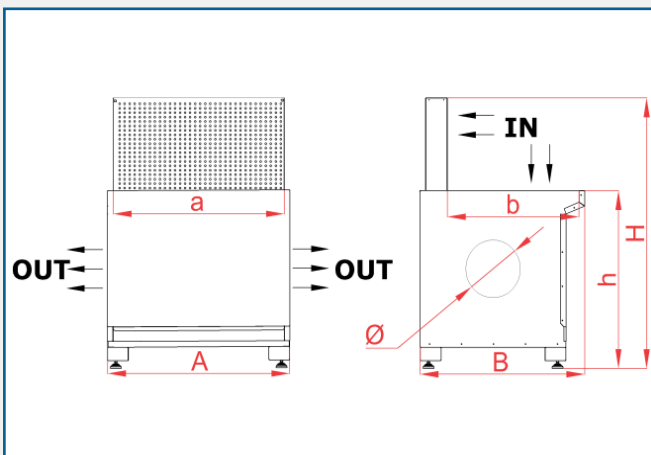
### FEATURES & OPTIONS

- Dust collection drawer
- Side and read panels (optional)
- Plasma cutting work surface
- Adjustable feet
- Outlet Ø300mm
- Vice base preparation (additional option)
- Castors (optional)
- Desk upgrade to 250 kg/m<sup>2</sup>

### TECHNICAL SPECIFICATION

Model	GEB 10	GEB 15	GEB 20	GEB 30
Pressure drop (Pa)	100	100	100	100
Dimensions (A x B x H) (mm)	930 x 900 x 1400	1430 x 900 x 1400	1930 x 900 x 1400	2820 x 900 x 1400
Worktop (a x b x h) (mm)	870 x 715 x 920/960	1370 x 715 x 920/960	1870 x 715 x 920/960	2760 x 715 x 920/960
Outlet (Ø)	300	300	300	300
Maximum load (kg/m <sup>2</sup> )	150	150	150	150
Suggested airflow (m <sup>3</sup> /h)	2000	2700	3300	4800
Suitable filter for standard applications	FEC APT FEC NV DCA GWF	FEC APT FEC NV DCA GWF	FEC APT FEC NV DCA GWF	FEC NV DCA GWF
Suitable filter for plasma cutting for 1 bench	FEC 4 NV	FEC 6 NV	FEC 6 NV	FEC 8 NV

### DIMENSIONS DRAWING



### INSTALLATION EXAMPLE



AES OFFER INSTALLATION AND SERVICE SUPPORT FOR ALL EQUIPMENT