

## PUREX 650 DIGITAL FUME EXTRACTOR



### DESCRIPTION

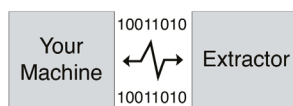
All functions of the Purex 650 Digital Fume Extractor are fully automatic, all the user has to do is to set the appropriate airflow on installation.

The unit is equipped with a monitoring and display system unique to Purex fume extractors.

### FEATURES

- Automatic electronic flow control - maintains a constant extraction rate even if the filter blocks
- Adjustable airflow
- Clear and informative graphic display
- Gas and particle sensors on the exhaust
- Submicronic (HEPA) filtration removes 99.997% of particles down to 0.3 microns
- Activated carbon filtration removes harmful gas
- Simple to install and quiet in operation
- Easy to relocate
- Precision made from stainless steel
- High performance brushless motors
- Remote interface capability

### INTERFACING



Interfacing can remotely start the Purex machine when the connected machine starts.

Interfacing can also warn the connected machine when the Purex machine is in alarm.

### TECHNICAL SPECIFICATION

Dimensions (W x D x H)	445 x 610 x 720 mm
Weight	55 kg
Airflow	645 m <sup>3</sup> /h
Power Consumption	120 V / 230 V - 0.36 kW
Frequency	50/60 Hz
Sound Level dB(A)	<60
<b>Filter Specifications</b>	
Pre Filter	F5 Pad
Main Filter	HEPA/Chemical

### SUPPLIED WITH

- 1 X Main Filter
- 1 x Pre Filter
- 1 x Connection Kit
- 1 x Power Cable
- 1 x Manual

### CONNECTION KIT

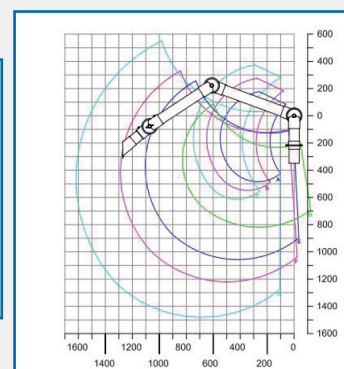
- The 650 machine is suitable for either single arm or dual arm.
- The machine is high in mobility due to its castors and the 75mm multi position arm; meaning the machine can be moved from station to station as and when required.
- The arm has a working range of between 550mm and 1620mm.
- The large hood area of 420mm x 320mm gives the operator ample space to work.

### OPTIONAL EXTRA

#### Optional Extra

Upgrade your 650 machine with an additional arm!

**Code:**  
Arm - 120197  
Hood - 840116



AES OFFER INSTALLATION AND SERVICE SUPPORT FOR ALL EQUIPMENT