

# GEOVENT POWERBOX III START/STOP AUTOMATIC



## DESCRIPTION

The Geovent PowerBox III is an automatic component which ensures the optimum use of the process extraction system. The PowerBox III senses via an inductive sensor, if the drilling, grinding or welding machine is activated and opens the motor damper and/or turns on the fan (via i.e. MultiBox III).

Using the PowerBox III, great savings on the energy consumption can be made on the electrical and heating bill since you only pay for the amount of extract air that you need. The system is automatically turned on/off which increases the usage (indoor climate) and lowers the general noise level, both resulting in a better working environment.

In function the PowerBox III has much resemblance to the Geovent PowerSmart II CEE plug. The difference lies in the fact that the PowerBox is slightly cheaper & has 3 inputs. On the contrary, the CEE plug has the benefit that one does not need to invest in a separate CEE plug.

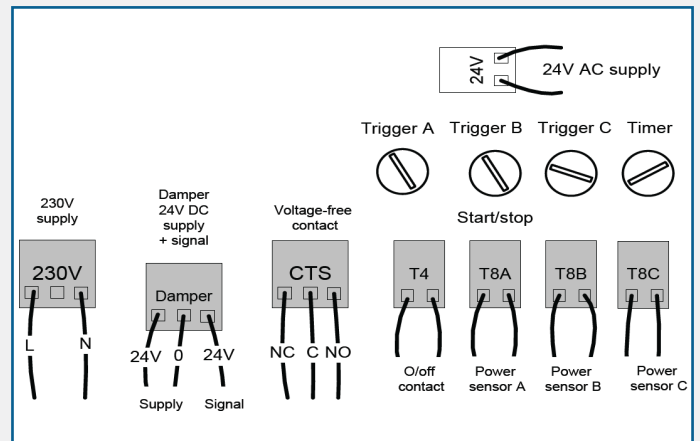
## FEATURES

- Easy to install/adjust.
- Up to 3 input from 3 different machines
- Separate sensitivity adjustment on each machine.
- Optional time settings on each input.
- Automatically turns on the system (CTS relay to be connected to MultiBox III).
- Flexible installation of sensor.
- The standard sensor needs an effect of 700W in order to be activated.
- The timer function is adjustabel from 2 sec. - 3 min. +/- 20%

## PART CODE/ORDERING TABLE

Item	Part Code
PowerBox III, excl. sensor	13-057
Inductive sensor for PowerBox III	13-047
Flux sensor for PowerBox III. Used for machines that does not comply with the EMC Directive.	13-047A

## INSTALLATION DIAGRAM



## POWERBOX III IN SITU



AES OFFER INSTALLATION AND SERVICE SUPPORT FOR ALL EQUIPMENT