

## COMPACT ARM Ø160 - Ø200 mm



### DESCRIPTION

The Compact Arm is the perfect extraction solutions where space is limited. Ideal for situations where the ceiling height is low, or the operator must work in a confined area e.g. a welding booth.

The compact arm operates with a telescopic function, creating a balance between a larger arms suction capacity, and a smaller arm's smooth operation.

The arm is stored away easily after work is completed, it is easy to maneuver and can be kept out of the way when not needed. A typical application for the arm would be on smaller welds where time and space are scarce.

The arm is supplied ready for mounting to the ceiling (360° rotation) or at the wall (wall bracket necessary - not included), a separate fan is also needed for the arm to operate. The arm can be extended by up to 7m by the means of optional extension arms.

### FEATURES

- **CEILING BRACKET** - 360° rotation: Steel console in powder coated enamel with brass bearing and VA rubber packing ring.
- **HOOD** - Light weight hood in either Ø160 or Ø200 mm. The hood is equipped with an integrated ergonomic handle. Covered in powder enamel.
- **ARM** - Aluminium profile with tension springs and sliding bearing to allow for telescopic function.
- **HOSE** - Black P2A1000 in strong PVC/polyester web with steel spiral. Temperature from -40°C to +100°C.

### ACCESSORIES

Part No.	Description
12-008	Air Tight Damper Ø160 mm
12-009	Air Tight Damper Ø200 mm
01-540	Wall Bracket Ø160 mm
01-541	Wall Bracket Ø200 mm
01-550	Extension Arm 1.0m Ø160 mm
01-550A	Extension Arm 1.0m Ø200 mm
01-130	Extension Arm 2.5m Ø160 mm
01-130A	Extension Arm 2.5m Ø200 mm
01-131	Extension Arm 4.0m Ø160 mm - 2 Joints
01-132	Extension Arm 4.0m Ø200 mm - 2 Joints
01-138	Extension Arm 4.0m Ø160 mm - 1 Joint
01-139	Extension Arm 4.0m Ø200 mm - 1 Joint
01-160	Ceiling Console Ø160 mm, lengths 0.4 - 1.2 m
01-161	Ceiling Console Ø160 mm, lengths 1.2 - 2.4 m
01-162	Ceiling Console Ø200 mm, lengths 0.4 - 1.2 m
01-163	Ceiling Console Ø200 mm, lengths 1.2 - 2.4 m



AES OFFER INSTALLATION AND SERVICE SUPPORT FOR ALL EQUIPMENT

# PRESSURE DROP GRAPHS FOR COMPACT ARM

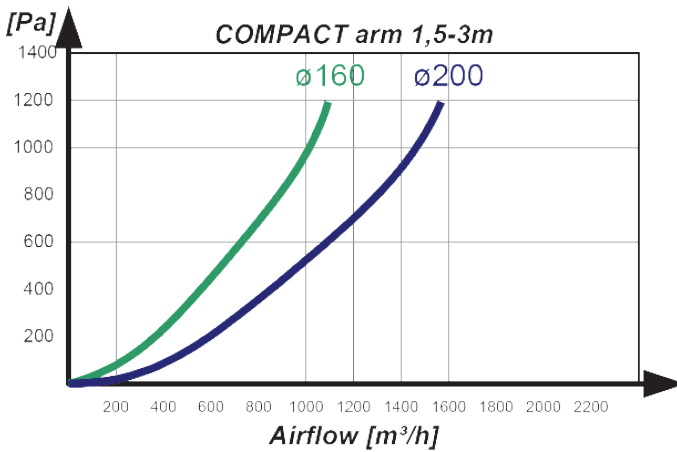
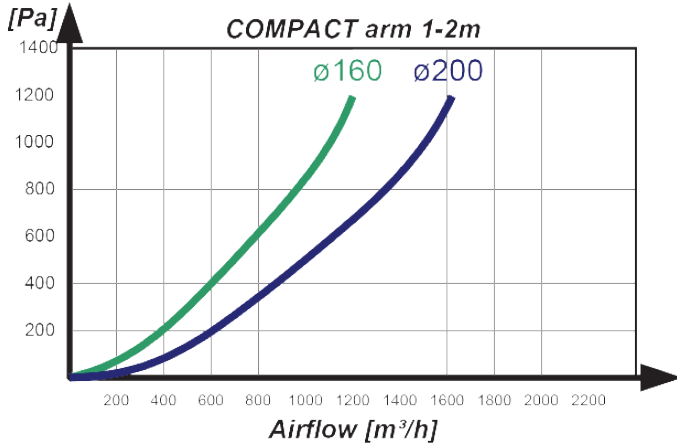
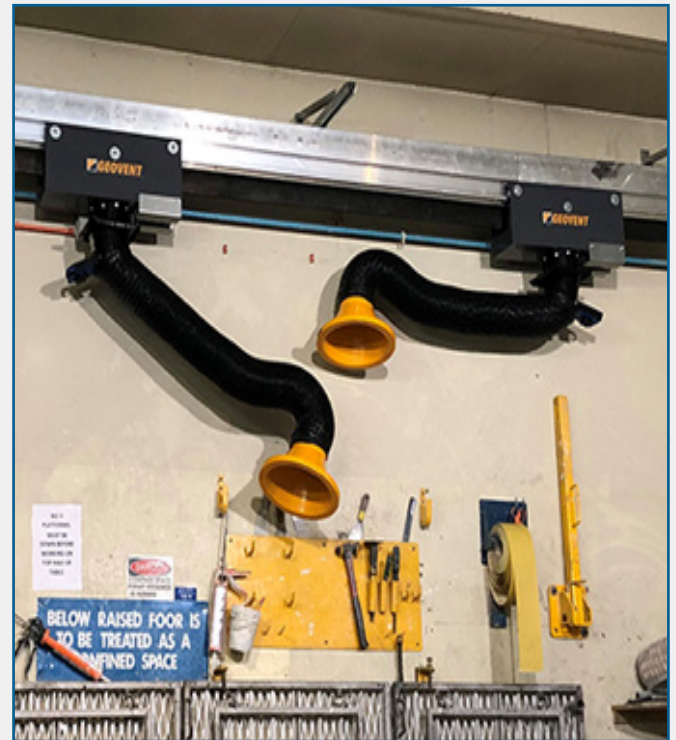
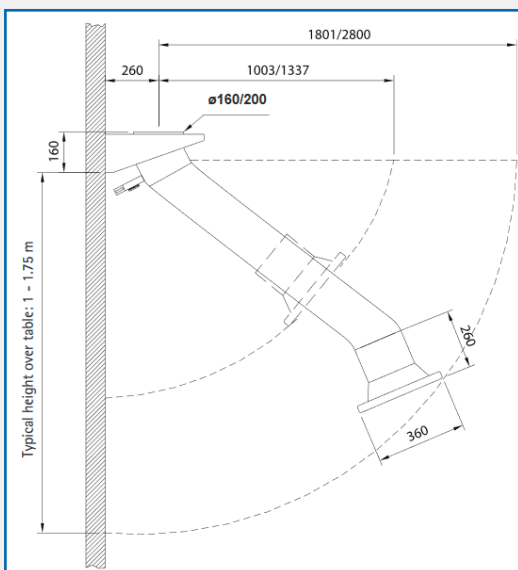


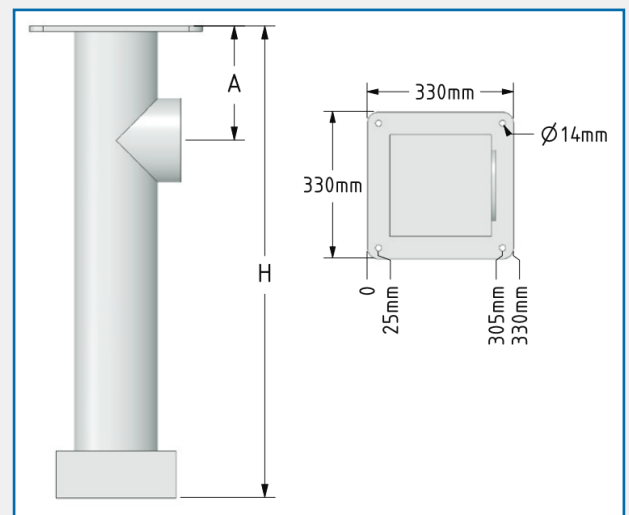
Image Below: Ø160 mm (1 - 2 m ) Compact Arm installed in a technical college. Including automatic control devices for automatic start/ stop of fan and motor damper. Installed in an AES weld booth.



## MOUNTING CONFIGURATION



## CEILING CONSOLE DIMENSIONS



AES OFFER INSTALLATION AND SERVICE SUPPORT FOR ALL EQUIPMENT