

WING ARM Ø160 - Ø200 mm

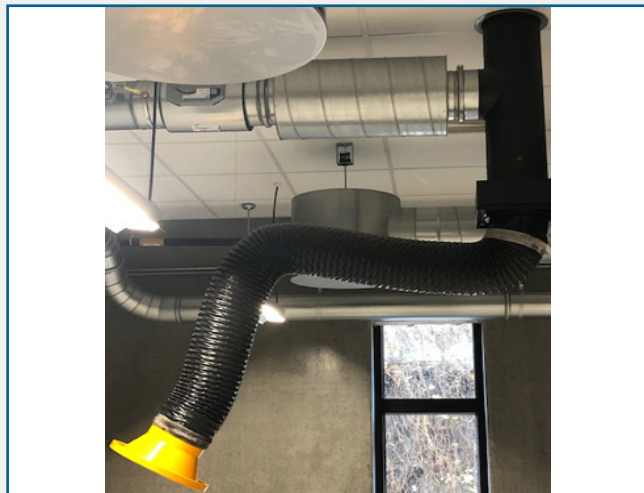


DESCRIPTION

The Wing Arm is a classically designed extraction arm. It has a timeless design dating back from 1968, with more than 10,000 manufactured units, the Wing Arm is a tried and tested construction. The design itself has been improved dramatically over the years, and is suitable for all types of point extraction e.g. welding fumes, oil fog, steams and dust.

The Wing Arm can be installed with extension arms as an optional accessory. These allow the Wing Arm to be extended up to 4.5 / 5.5 / 6.0 / 7.0 or 8.0 m.

Another installation option is for the Wing Arm to be directly connected to an MSF 200 0.75kW fan, coming in either single-phase 230V or three-phase 415V.



FEATURES/SPECIFICATION

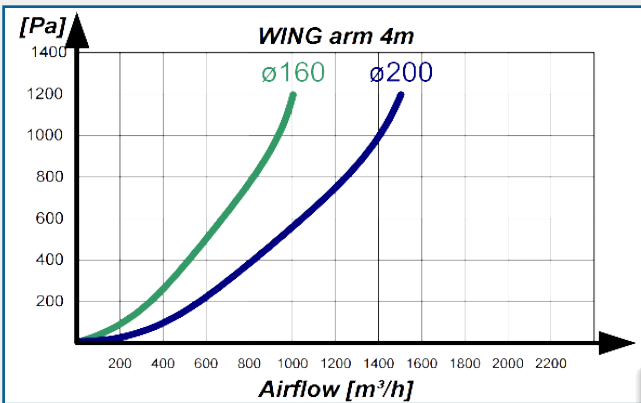
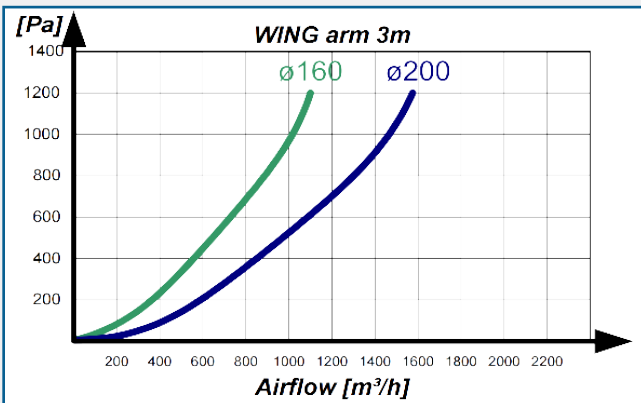
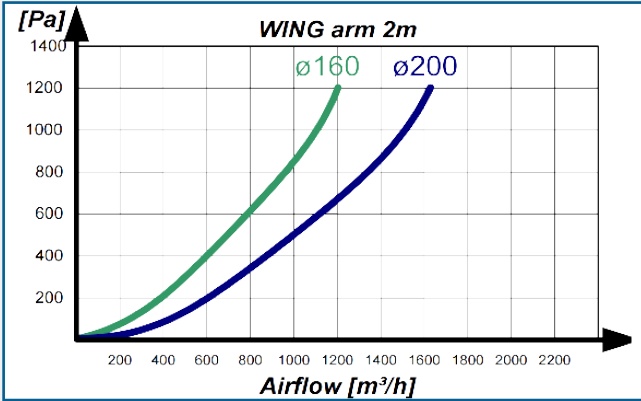
- **CEILING BRACKET** - 360° rotation: Steel console in powder coated enamel with brass bearing and VA rubber packing ring.
- **HOOD** - Light weight aluminium epoxy enamel hood, equipped with an integrated ergonomic handle.
- **ARM** - The arm has inner carrying arms with 3 stable self adjusting friction couplings, which ensures that the extraction arm is kept in the wanted position. Aluminium 25 x 25 mm pipe connected via a knee joint with friction discs and pull springs.
- **HOSE** - Black P2A1000 in strong PVC/ polyester web with steel spiral. Temperature from -40°C to +100°C. GeoFlex Weld Hose.
- **WEIGHT** - 11 - 16 kg depending on model

ACCESSORIES

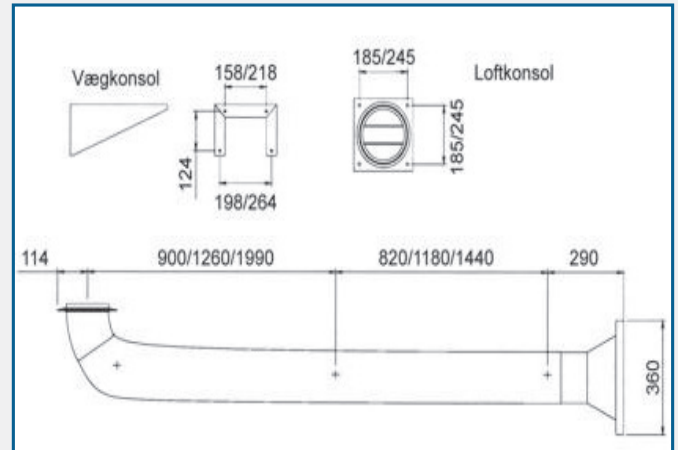
Part No.	Description
12-008	Air Tight Damper ø160 mm
12-009	Air Tight Damper ø200 mm
01-540	Wall Bracket ø160 mm
01-541	Wall Bracket ø200 mm
01-550	Wall Bracket Ø160 mm 1 m from wall
01-550A	Wall Bracket Ø200 mm 1 m from wall
01-181	Extension arm 2m, 1-joint for 160 mm, incl. wall bracket, excl. adapter
01-181A	Extension arm 2m, 1-joint for 200 mm, incl. wall bracket, excl. adapter
01-182	Extension arm 3m, 1-joint for 160 mm, incl. wall bracket, excl. adapter
01-182A	Extension arm 3m, 1-joint for 160 mm, incl. wall bracket, excl. adapter
01-183	Extension arm 4m, 1-joint for 200 mm, incl. wall bracket, excl. adapter
01-183A	Extension arm 4m, 1-joint for 160 mm, incl. wall bracket, excl. adapter
01-184	Extension arm 5m, 1-joint for 200 mm, incl. wall bracket, excl. adapter
01-184A	Extension arm 5m, 1-joint for 160 mm, incl. wall bracket, excl. adapter
01-186	Extension arm 4m, 2-joint for 160 mm, incl. wall bracket, excl. adapter
01-186	Extension arm 4m, 2-joint for 200 mm, incl. wall bracket, excl. adapter

AES OFFER INSTALLATION AND SERVICE SUPPORT FOR ALL EQUIPMENT

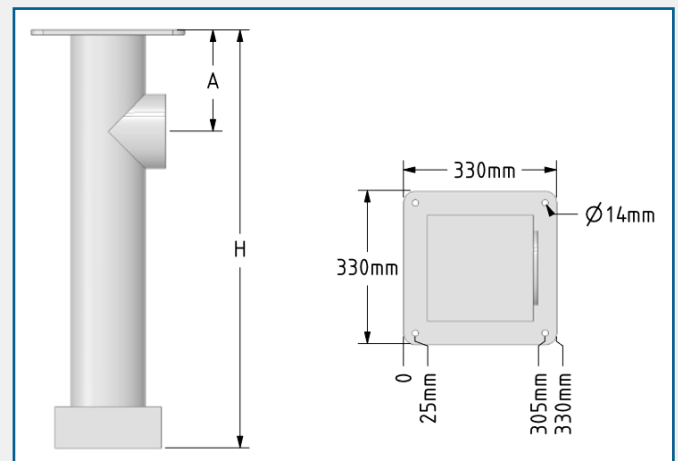
PRESSURE DROP GRAPHS FOR WING ARM



DIMENSIONS



OFF CEILING CONSOLE DIMENSIONS



AES OFFER INSTALLATION AND SERVICE SUPPORT FOR ALL EQUIPMENT