

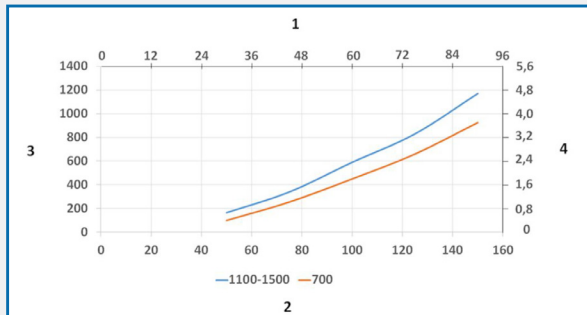
NEDERMAN FX2 50MM ESD/EX BENCHTOP EXTRACTION ARM



TECHNICAL SPECIFICATION

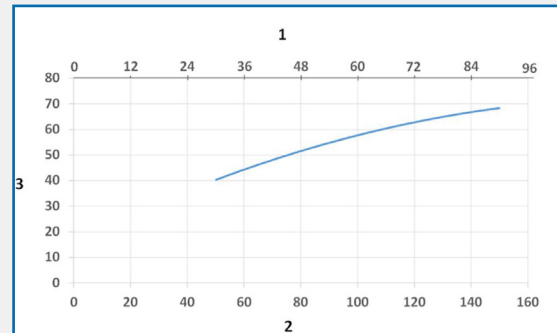
Airflow	50 - 110 m ³ /h
Arm Length	(see diagrams)
Extraction Arm Diameter	Ø50
Installation	(Indoor)
Material	Tubes in anodized aluminium. Joints in conductive PP plastic. Duct connector in conductive EPDM rubber. Minihood in conductive PP plastic.
Fume Temperature	Max. Temperature 70°C
Noise Level	60 dB(A) at 110 m ³ /h

PRESSURE DROP DIAGRAM



- 1) X-Axis: Air Flow Rate (cfm)
- 2) X-Axis: Air Flow Rate (m/h)
- 3) Y-Axis: Static Pressure Drop (Pa)
- 4) Y-Axis: Static Pressure Drop (in. wg.)

SOUND LEVEL DIAGRAM



- 1) X-Axis: Air Flow Rate (cfm)
- 2) X-Axis: Air Flow Rate (m/h)
- 3) Y-Axis: Sound Pressure Level (dB) (A)

DESCRIPTION

Nederman FX2 Arms are made of lightweight anodized aluminium sections, with two or three adjustable, composite friction joints. Offering strength and durability combined with easy handling, they can be used in many types of environment. They are especially suitable for applications where small, flexible and easy-to-use arms are required.

The arm is designed for use in electronic environments where there is a risk of electrostatic discharges. The ESD/EX can also be used for certain applications in potentially explosive atmospheres. Recommended for use in zone 1, 2 and 21, 22.

FEATURES

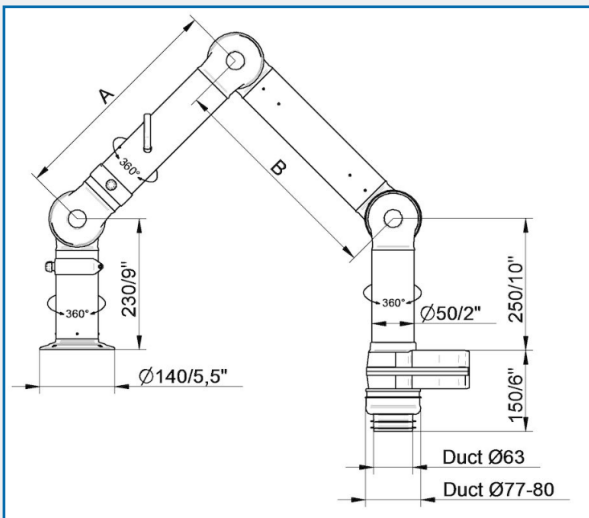
- Optimal efficiency and low noise provides safe and quiet working environment.
- Ceilings, walls and floors or fixed to worktops mountings and cut2fit extension profile gives maximum installation flexibility.
- The two outermost arm joints can rotate and swivel through 360°, which gives the unique maneuverability.
- The lean, smooth and aesthetic design allows arms to fit in well in any environment without compromising its durability and reliability.
- Highly integrated products that save customers' time and costs, as well as providing the reliability and functionality to deliver a better performance.

AES OFFER INSTALLATION AND SERVICE SUPPORT FOR ALL EQUIPMENT

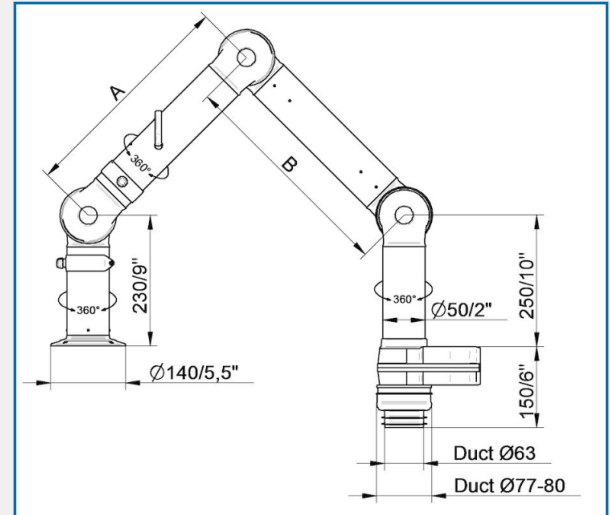
NEDERMAN FX2 50MM ESD/EX BENCHTOP EXTRACTION ARM

PART CODES

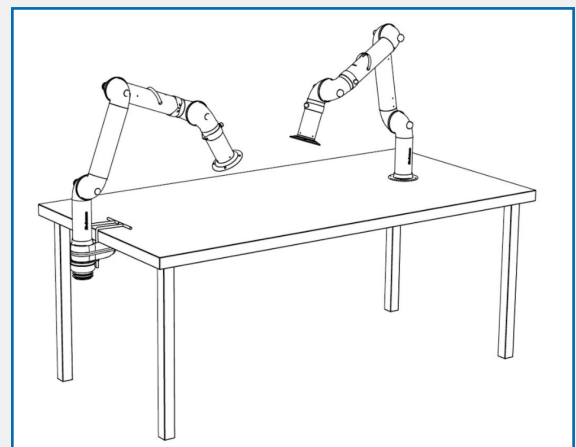
Description	Part Codes
FX2-ESD/EX-D50-L700-Up/Down-Low	70601244
FX2-ESD/EX-D50-L700-Up/Down-Through	70601444
FX2-ESD/EX-D50-L1100-Up-Low	70601544
FX2-ESD/EX-D50-L1100-Down-Low	70601744
FX2-ESD/EX-D50-L1100-Down-Through	70601844
FX2-ESD/EX-D50-L1500-Up-Low	70601944
FX2-ESD/EX-D50-L1500-Down-Low	70602144
FX2-ESD/EX-D50-L1500-Down-Through	70602244



- FX2-ESD/EX-D50-L700-Up/Down-Low
- Part Number: 70601244
- Max. working radius: 630 mm (24.8 in)
- A: 400 mm (15.7 in)
- FX2-ESD/EX-D50-L1100-Down-Low
- Part Number: 70601744
- Max. working radius: 1030 mm (40.5 in)
- A: 400 mm (15.7 in)
- B: 400 mm (15.7 in)
- FX2-ESD/EX-D50-L1500-Down-Low
- Part Number: 70602144
- Max. working radius: 1430 mm (56.3 in)
- A: 500 mm (19.7 in)
- B: 700 mm (27.6 in)



- FX2-ESD/EX-D50-L700-Up/Down-Through
- Part Number: 70601444
- Max. working radius: 630 mm (24.8 in)
- A: 400 mm (15.7 in)
- B: -
- FX2-ESD/EX-D50-L1100-Down-Through
- Part Number: 70601844
- Max. working radius: 1030 mm (40.5 in)
- A: 400 mm (15.7 in)
- B: 400 mm (15.7 in)
- FX2-ESD/EX-D50-L1500-Down-Through
- Part Number: 70602244
- Max. working radius: 1430 mm (56.3 in)
- A: 500 mm (19.7 in)
- B: 700 mm (27.6 in)



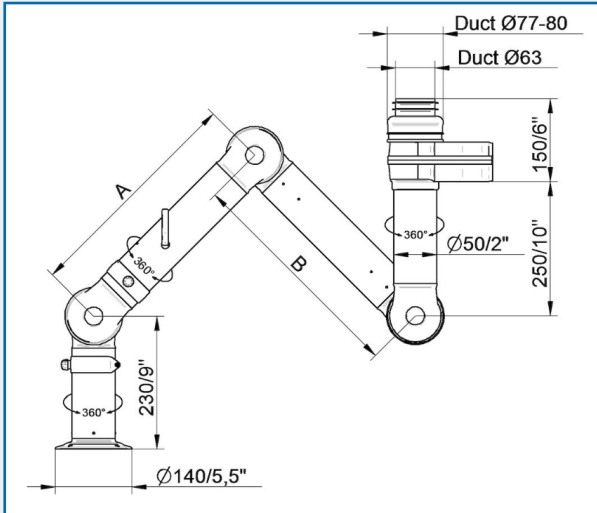
Bench mounting examples:

Left: FX2-Down-Low arm with following accessories:
-FX2-Bench bracket kit-D-50/75/100

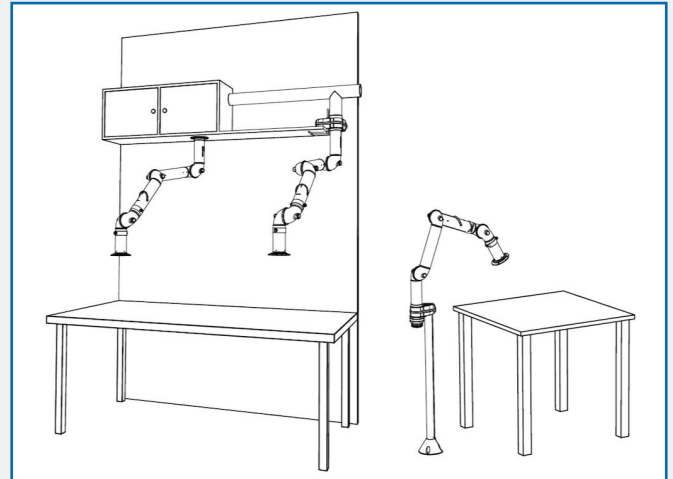
Right: FX2-Down-Through arm

AES OFFER INSTALLATION AND SERVICE SUPPORT FOR ALL EQUIPMENT

NEDERMAN FX2 50MM ESD/EX BENCHTOP EXTRACTION ARM



- FX2-ESD/EX-D50-L700-Up/Down-Low
- Part Number: 70601244
- Max. working radius: 630 mm (24.8 in)
- A: 400 mm (15.7 in)
- B: -
- FX2-ESD/EX-D50-L1100-Up-Low
- Part Number: 70601544
- Max. working radius: 1030 mm (40.5 in)
- A: 400 mm (15.7 in)
- B: 400 mm (15.7 in)
- FX2-ESD/EX-D50-L1500-Up-Low
- Part Number: 70601944
- Max. working radius: 1430 mm (56.3 in)
- A: 500 mm (19.7 in)
- B: 700 mm (27.6 in)



• Other mounting examples:

Left: Overbench cabinet mounting with FX2-Up/Down-Through arm

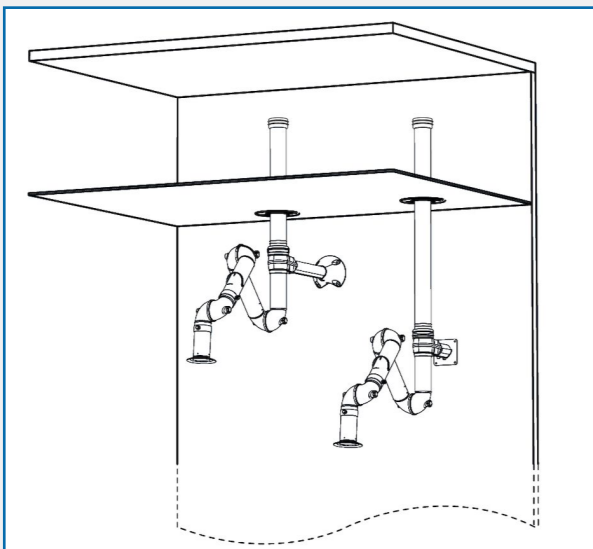
Middle: Shelf mounting with FX2-Up-Low arm and following accessories:

- FX2-Bench bracket kit

Right: Floor mounting with FX2-Up-Low arm and following accessories:

-FX-Classic bracket

-FX-Cut2fit extension-L1100



Wall mounting examples:

Left: FX2-Up-Low arm with following accessories:

-FX2-Bracket kit-D-50/75/100-L500

-FX2-Ceiling cover plate-PLUS

-FX2-Alu duct

-FX2-Duct connector-ESD/EX-D75

Right: Up-Low arm with following accessories:

-FX2-Wall BRKT kit-Flat-L190-Black

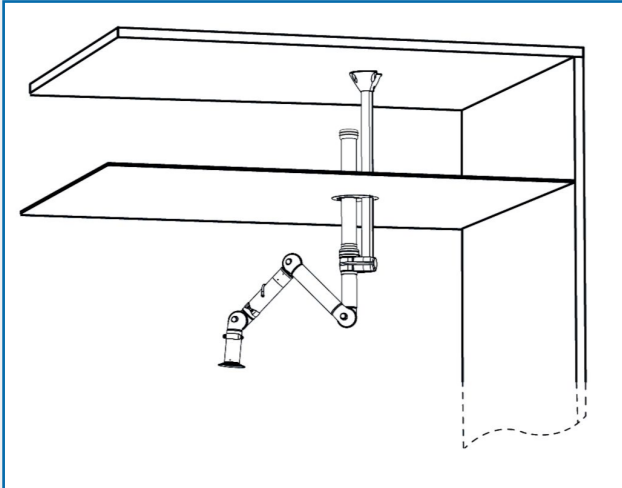
-FX2-Ceiling cover plate-PLUS

-FX2-Alu duct

-FX2-Duct connector-ESD/EX-D75

AES OFFER INSTALLATION AND SERVICE SUPPORT FOR ALL EQUIPMENT

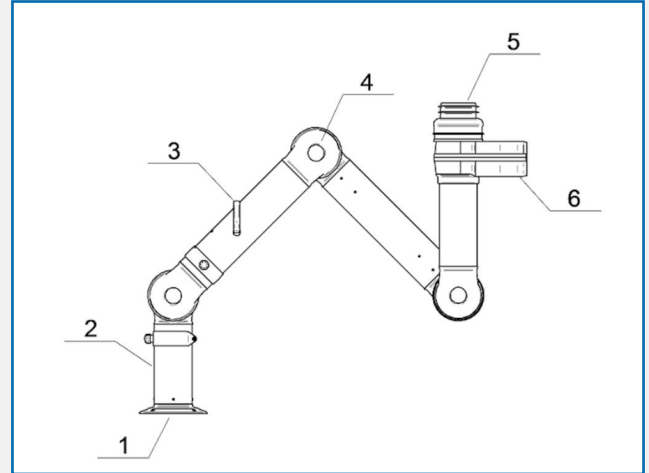
NEDERMAN FX2 50MM ESD/EX BENCHTOP EXTRACTION ARM



• **Ceiling mounting example:**

Left: FX2-Up-Low arm with following examples:

- FX-Classic bracket
- FX-Cut2fit extension-L1100
- FX2-Alu duct
- FX2-Duct connector-ESD/EX-D75
- FX-Ceiling cover plate



Material:

- 1) Flange: Conductive PP plastic
- 2) Tubes: Aluminium, anodized 10 µm
- 3) Damper adjustment handle: Aluminium: anodized µm
- Internal spring: Stainless steel
- Damper blade: Conductive TP & PP plastic
- 4) Joints conductive: PP plastic with glass fibre reinforcement
- Plastic rings conductive: PP plastic with glass fibre reinforcement
- Axial locking rings conductive: PP plastic with glass fibre reinforcement
- Adjustment knobs: PA & EDS plastic
- Threaded shaft inside joints: Stainless steel
- 5) Duct connector: conductive EPDM Rubber
- 6) Swivel: Aluminium, conductive powder coating
- Rivets: Aluminium
- Bearings swivel conductive: PP plastic with glass fibre reinforcement.



AES OFFER INSTALLATION AND SERVICE SUPPORT FOR ALL EQUIPMENT