

AIRBENCH RP DOWNDRAUGHT BENCH



GENERAL SPECIFICATIONS

Power Supply	230v Single Phase - 110v & 415v Available
Surface Loading	150 kg - Higher Loadings on Request
Finish	Textured Grey powder coat - other finished available on request
Noise Level	70 dB(A) average across range @ 1m from bench
Air Supply	Clean, dry air at 5bar

Specifications vary for some filter configurations

Dimensions nominal; specifications subject to change

DESCRIPTION

AirBench RP introduces a step-change in downdraught bench technology. RP uses an integral air tank to clean its filters on demand using a blast of compressed air. These models are suitable for high dust generation applications for non-explosive dusts, and are particularly well suited to stone masons.

AirBench RP is available in various size and layout configurations to suit your working environment.

FEATURES

- Unique self-cleaning filter system
- Heavy Duty 2mm steel
- Fully welded and powder coated
- 3mm steel surface, perforated and powder coated
- 3 high capacity, long-life cartridge filters.
- Integral air tank for filter cleaning.
- Manual or automatic filter cleaning mechanism.

FILTER CONFIGURATIONS

Filter Category	Applications	Filters
Standard	Stone	Standard Cartridge Filters with Self-cleaning filter mechanism
HEPA Filtered RPL	Stone	Standard Cartridge Filters with Self-cleaning filter mechanism with final stage H13 HEPA



Self-cleaning filter system

Filters are cleaned by compressed air pulse, into lightweight bins for quick disposal.



Intelligent Control

Two button operation - Green to go; Red to stop; Hold Green to clean filters.



Single Phase Operation

Operates from a standard 240v single phase socket.



Energy Efficient

EC Fan Technology allows single phase low voltage operation.



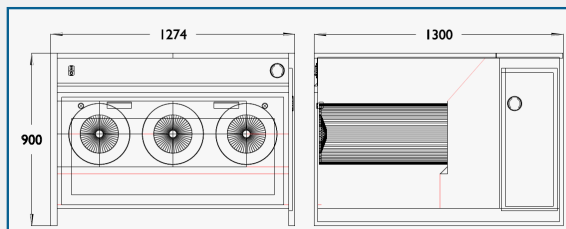
AES OFFER INSTALLATION AND SERVICE SUPPORT FOR ALL EQUIPMENT

AIRBENCH RP DOWNDRAUGHT BENCH

AVAILABLE MODELS

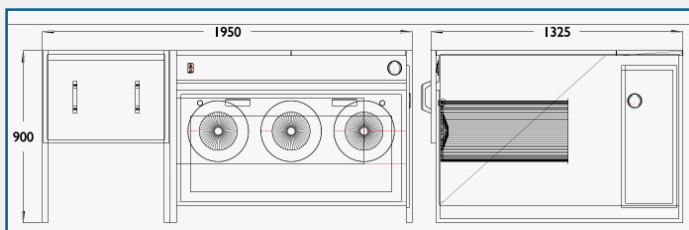
RP1212

Fan Type	Forward Curved Centrifugal
Standard Fan Power	1.25 kW
Nominal Airflow	4250 m ³ /h @ 100 Pa 1.2 m/s at surface
Dimensions	1950 x 1300 x 900 mm
Actual Vented Area	1210 x 956 mm



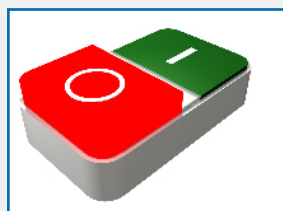
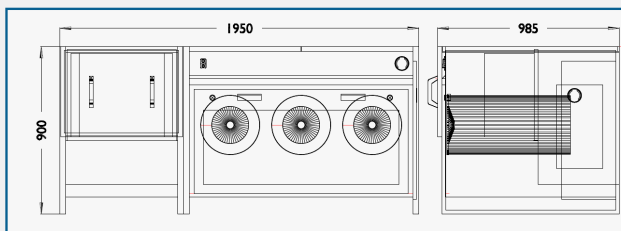
RPL1212 (HEPA Filtered)

Fan Type	Forward Curved Centrifugal
Standard Fan Power	1.25 kW
Nominal Airflow	4250 m ³ /h @ 100 Pa 1.2 m/s at surface
Dimensions	1274 x 1300 x 900 mm
Actual Vented Area	1210 X 956 mm



RP1920

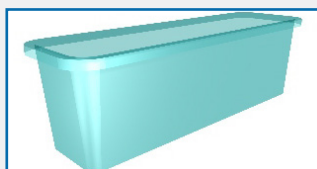
Fan Type	Forward Curved Centrifugal
Standard Fan Power	1.25 kW
Nominal Airflow	4250 m ³ /h @ 100 Pa 1.2 m/s at surface
Dimensions	1950 x 985 x 900 mm
Actual Vented Area	1210 x 956 mm



Controls - On/off switch or optional speed control wired to standard 13a plug for rapid installation.

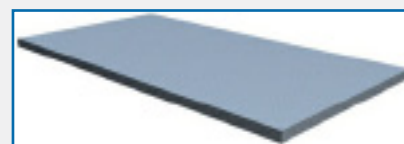


Filter monitoring by differential pressure gauge.

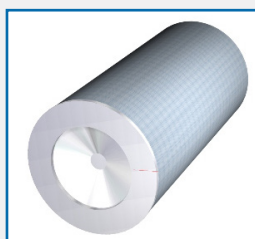


Dust Removal

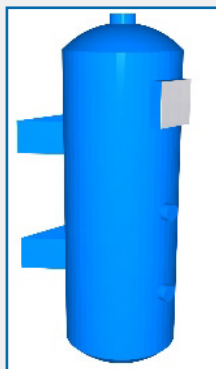
Dust is deposited into plastic bins for easy disposal



Surface - Heavy duty 3mm perforated steel plate with 4mm dia perforations, powder coated. In 2 sections for ease of access.



Filters - Long life cartridge filters designed for cleaning with compressed air. Available with anti-static coating.



Filter Cleaning

- On board compressed air tank cleans filters using high pressure air pulse. Requires clean air supply.



Fan - High powered centrifugal fan with energy efficient EC Motor.

AES OFFER INSTALLATION AND SERVICE SUPPORT FOR ALL EQUIPMENT

AIRBENCH RP DOWNDRAUGHT BENCH - ACCESSORIES

<p>Modrack</p> 	<p>500 enclosure w/ mounts Posts Light and support shelf 300 mm shelf Rear panel with bin rails 2 x socket service panel Airline service panel Airline/socket panel 110 V socket panel</p>	<p>2 x socket service channel Airline service channel Airline/socket channel 110 V service channel</p>
<p>1m Enclosure with Top</p> 	<p>Dimensions</p>	<p>Part Codes</p>
	<p>600 x 600</p>	<p>604014</p>
	<p>600 x 900</p>	<p>604015</p>
	<p>1200 x 600</p>	<p>604016</p>
	<p>1800 x 600</p>	<p>604017</p>
	<p>1200 x 900</p>	<p>604018</p>
	<p>1800 x 900</p>	<p>604019</p>
<p>300 mm enclosure</p>		
	<p>600 x 600</p>	<p>604001</p>
	<p>600 x 900</p>	<p>604002</p>
	<p>1200 x 600</p>	<p>604003</p>
	<p>1800 x 600</p>	<p>604005</p>
	<p>1200 x 900</p>	<p>604006</p>
	<p>1800 x 900</p>	<p>604007</p>

AES OFFER INSTALLATION AND SERVICE SUPPORT FOR ALL EQUIPMENT

AIRBENCH RP DOWNDRAUGHT BENCH - ACCESSORIES

Rubber matting	Dimensions	Part Codes
	600 x 600	607003 x 1
	600 x 900	607001 x 1
	1200 x 600	607002 x 1
	1800 x 600	607004 x 1
	1200 x 900	607001 x 2
	1800 x 900	607001 x 3
MDF surfaces		
	600 x 600	607010
	600 x 900	607013
	1200 x 600	607011
	1800 x 600	607012
	1200 x 900	607014
	1800 x 900	607015
Castors	Item	Part Code
	Castors	WFP

AES OFFER INSTALLATION AND SERVICE SUPPORT FOR ALL EQUIPMENT