

## GEOVENT MSQ-200-3 CENTRIFUGAL FAN



### DESCRIPTION

The MSQ fan is used for direct connection on a console for WING/COMPACT extraction arms and GTE/GTS hose reels.

The impeller and the high quality motor ensures high performance, low sound level and maximum durability. The fan housing in enameled sheet metal is designed for indoor installations only.

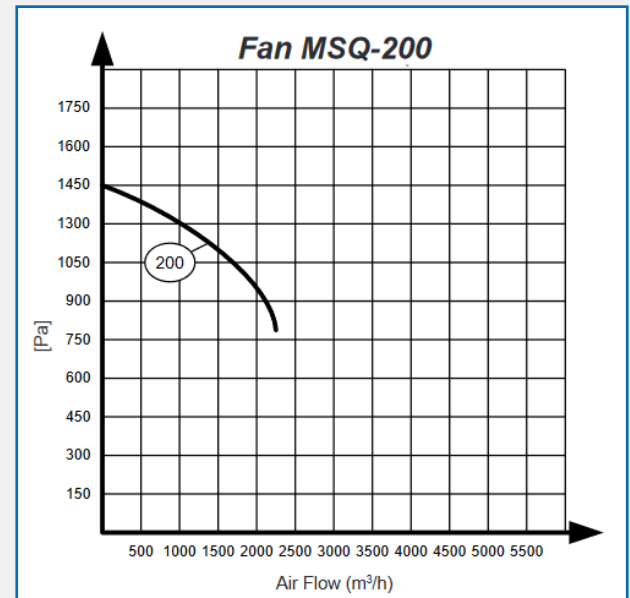
### FEATURES

- The 0.75 kW model is perfectly suited as a stand-alone fan for one Ø160 WING/COMPACT arm or one GTS/GTE hose reel up to Ø150.
- Minimize the need for expensive duct systems as only one outlet is needed.
- Adaptors available for direct mount on WING/COMPACT Arms or GTS/GTE Hose Reels.

### ORDERING TABLE / ACCESSORIES

Art. No.	Description
31-209	Fan MSQ-200-3, 0.75kW, 400 V 3ph, 1400 m³/h - 1.9A
31-019	Outlet flange 200/Ø160 for MSQ-200
04-460A	Mounting Bracket for hose reel GTE/GTS (factory fitted). For mounting the MSQ Fan Directly on the side of the Hose Reel.
31-201	Adaptor for mounting on wall console for Ø160 arms
31-207	Adaptor for mounting on wall console for Ø200 arms

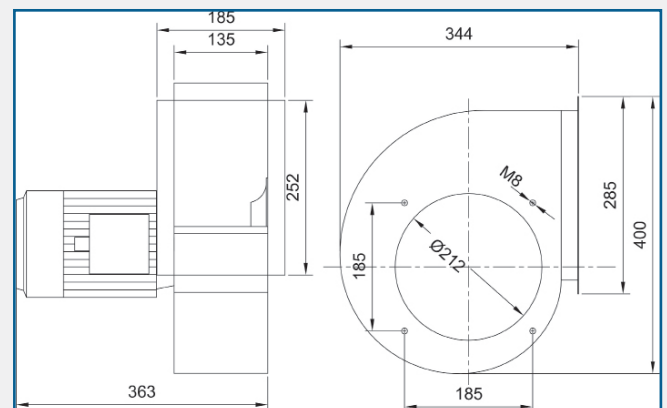
### FAN PRESSURE/AIRFLOW CURVE



### TECHNICAL SPECIFICATION

Motor Power	0.75 kW - 1.9 A
Voltage	400 V 3 Ph
Air Volume	1400 m³/h
Pressure	1.15 kPa @ 1400m³/h
Dimensions	344 x 363 x 400 mm

### DIMENSIONS



AES OFFER INSTALLATION AND SERVICE SUPPORT FOR ALL EQUIPMENT