

GEOVENT MSQ-200-1 CENTRIFUGAL FAN



DESCRIPTION

The MSQ fan is used for direct connection on a console for WING/COMPACT extraction arms and GTE/GTS hose reels.

The impeller and the high quality motor ensures high performance, low sound level and maximum durability. The fan housing in enameled sheet metal is designed for indoor installations only.

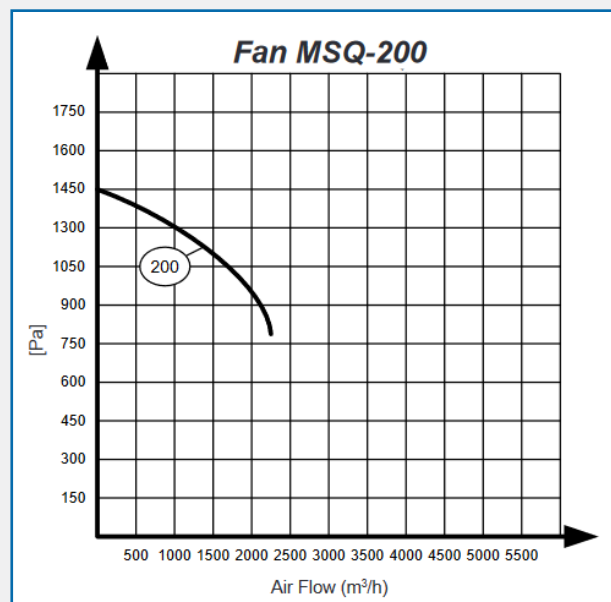
FEATURES

- The 0.75 kW model is perfectly suited as a stand-alone fan for one $\varnothing 160$ WING/COMPACT arm or one GTS/GTE hose reel up to $\varnothing 150$.
- Minimize the need for expensive duct systems as only one outlet is needed.
- Adaptors available for direct mount on WING/COMPACT Arms or GTS/GTE Hose Reels.

ORDERING TABLE / ACCESSORIES

Art. No.	Description
31-208	Fan MSQ-200-1, 0.75 kW 1 x 230 V, 1400 m ³ /h - 4.9A
31-019	Outlet flange 200/ $\varnothing 160$ for MSQ-200
04-460A	Mounting Bracket for hose reel GTE/GTS (factory fitted). For mounting the MSQ Fan Directly on the side of the Hose Reel.
31-201	Adaptor for mounting on wall console for $\varnothing 160$ arms
31-207	Adaptor for mounting on wall console for $\varnothing 200$ arms

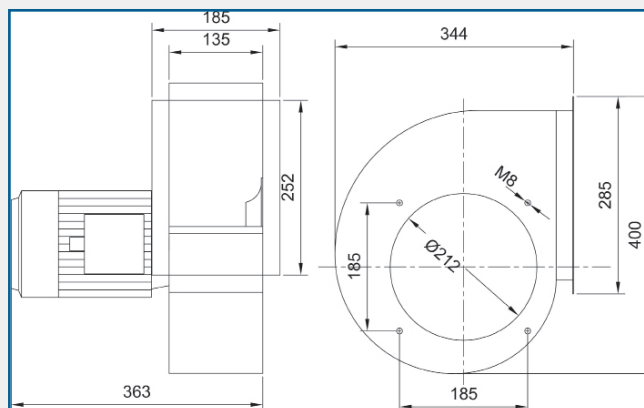
FAN PRESSURE/AIRFLOW CURVE



TECHNICAL SPECIFICATION

Motor Power	0.75 kW - 4.9A
Voltage	230 V 1 Ph
Air Volume	1400 m ³ /h
Pressure	1.15 kPa @ 1400m ³ /h
Dimensions	344 x 363 x 400 mm

DIMENSIONS



AES OFFER INSTALLATION AND SERVICE SUPPORT FOR ALL EQUIPMENT