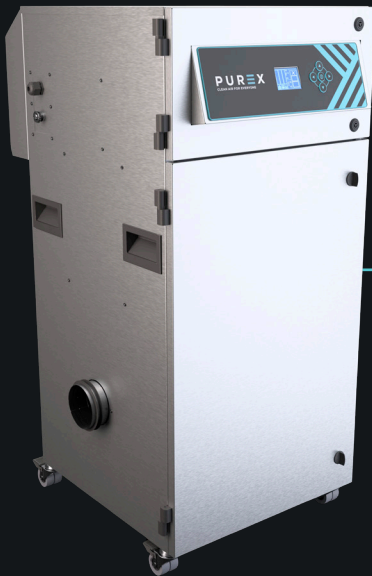


750i 2-Tier

Moderate, multi-use fume extraction unit

PUREX
CLEAN AIR FOR EVERYONE



Description & features

- Clear & informative graphic display
- Highest grade HEPA and carbon technology
- Automatic electronic flow control - maintains a constant extraction rate even as the filter blocks
- Gas and particle sensors to warn the operator
- Adjustable airflow
- High performance machine, ready to plug in

Filters



Main Filter Code

113652

Description

HEPA/Chemical



Pre-Filter Code

111098

Description

F6 Labyrinth

Specification

Voltage	100v - 230v
Part Number	075000D
Wattage	2.4kW
Frequency	50Hz / 60Hz
Cabinet Height	1155mm
Cabinet Width	571mm
Cabinet Depth	675mm
Cabinet Weight	83kg
Airflow	750m3/h
Sound Level	<60dBa

Machine supplied with

- 1 x Main Filter • 1 x Pre-filter • 1 x 4.5m Fixed Power Cable (plug fitted) • 1 x Manual
- Plug connections must be specified

W aessolutions.co.uk | T +44 (0) 141 892 6690 | E sales@aessolutions.co.uk
*Goods are subject to change by manufacturer without notice | **Illustrations are 3D created visual representations



Creating Safer Workplaces

shopaessolutions.co.uk

750i 2-Tier

Moderate, multi-use fume extraction unit

Options

Main Filter

Code	Description
113651	Chemical
113658	HEPA / Chemical (Cleanroom)
113660	HEPA / Twin Chemical
113650	HEPA
113667	Solvent Lock

Pre-filter

111004	F8 / F9 Labyrinth
--------	-------------------

Connection kits

If you do not see a connection kit that fits your machine or pipework, please contact your representative

120288

Hose End Diameter	Hose Length	Purex Inlet Diameter
80mm	2.3m	100mm

Connect to 80mm diameter pipe/port

100105

Hose End Diameter	Hose Length	Purex Inlet Diameter
100mm	2m	100mm

Connect to 100mm diameter pipe/port

100107

Hose End Diameter	Hose Length	Purex Inlet Diameter
100mm	3m	100mm

Connect to 100mm diameter pipe/port

120291

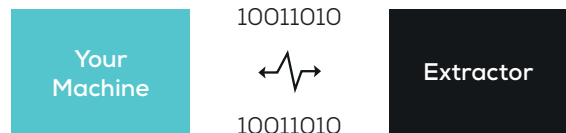
Hose End Diameter	Hose Length	Purex Inlet Diameter
100mm	3m	100mm

Connect to 100mm diameter pipe/port

Interfacing

Interfacing can remotely start the Purex machine when the connected machine starts.

Interfacing can also warn the connected machine when the Purex machine is in alarm.



Take a look through our [Interfacing Guide](#) to see our extensive range of options