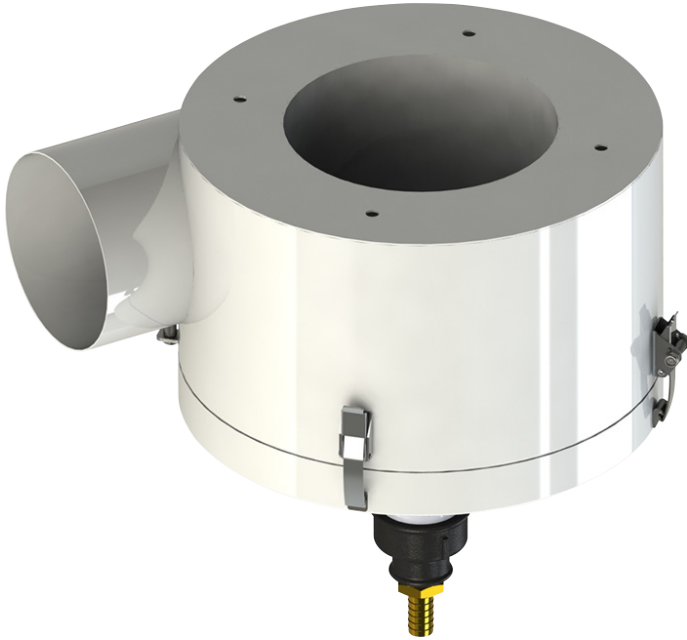


FILTERMIST COMPACT CYCLONE PRE-FILTER



TECHNICAL SPECIFICATION

5000CYL			
Airflow (m ³ /h)	Direct mounted to	50 Hz	60 Hz
	FX5002	955	1160
	FX6002	1120	1368
	FX7002	1540	-
Weight (kg)	8		
Construction	Mild Steel		
	Powder Coated Grey RAL7035		

DESCRIPTION

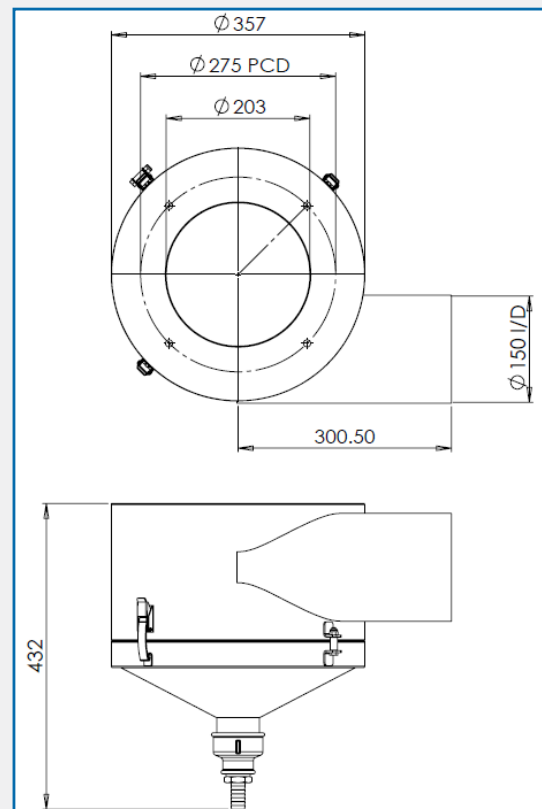
The Filtermist Compact Cyclone Pre-Filter is designed to collect dust and swarf before it enters the Filtermist unit.

The system is attached to the inlet of the Filtermist unit and the contaminated air passes through it. The low-pressure area within the separator encourages the heavier particles to fall to its base where they can be easily removed.

Filtermist has re-designed the cyclone, without impacting on the efficiency of the oil mist collector, into a shorter system to complement its compact extraction units.



DIMENSIONS



AES OFFER INSTALLATION AND SERVICE SUPPORT FOR ALL EQUIPMENT