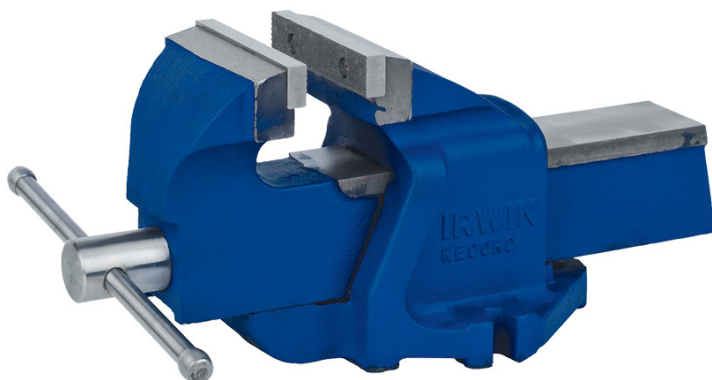


## IRWIN RECORD MECHANICS VICES



### DESCRIPTION

Rigid and robust, the body and sliding jaw are cast from close grained grey iron which is machined on all friction surfaces for a smooth reliable action. The jaws, handle and main screw are steel, the latter having a two-start rolled acme thread to speed the jaws from fully closed to fully open with a minimum of winding. **Irwin Record Vices are available in jaw sizes of 3" to 8".**

### FEATURES

- Replaceable hardened steel jaws
- Fused steel handle bends before vice can be overstressed
- Machined steel mainscrew with rolled two-start acme thread for wear-resistance and smooth operation
- Fully machined load bearing surfaces
- Internal sg nut takes load, secures and aligns mainscrew. Can be replaced when worn, saving cost of replacement of whole vice body.
- Safety stop prevents slide from accidentally separating from body.
- Lip on back body guides filings and fragments away from the slide.

### TECHNICAL SPECIFICATION

#### 3" Mechanics Vice

Throat Depth	48mm
Weight	5.5kg

#### 4" Mechanics Vice

Throat Depth	70mm
Weight	15kg

#### 4.5" Mechanics Vice

Throat Depth	75mm
Weight	19.1kg

#### 5" Mechanics Vice

Throat Depth	82mm
Weight	24.1kg

#### 6" Mechanics Vice

Throat Depth	90mm
Weight	31.8kg

#### 8" Mechanics Vice

Throat Depth	100mm
Weight	38.1kg

Jaw Material	Hardened Steel
Handle Material	Fused Steel
Mounting	Bench Mountable

### AES PART CODE/ORDERING TABLE

3" Irwin Record Mechanics Vice	FS-VCXX
4" Irwin Record Mechanics Vice	FS-VCXX
4.5" Irwin Record Mechanics Vice	FS-VCXX
5" Irwin Record Mechanics Vice	FS-VCXX
6" Irwin Record Mechanics Vice	FS-VCXX
8" Irwin Record Mechanics Vice	FS-VCXX

AES OFFER INSTALLATION AND SERVICE SUPPORT FOR ALL EQUIPMENT