

FILTERMIST CSX LOW LEVEL STAND



TECHNICAL SPECIFICATION

MPS1200

	Used in conjunction with	50 Hz	60 Hz
Airflow (m ³ /h)	FX5002	955	1160
	FX6002	1120	1368
	FX7002	1540	-
Weight (kg)	58.5		
Construction	Mild Steel		
	Powder Coated Grey RAL7035		



DESCRIPTION

Filtermist units efficiently remove oil & coolant mist, fume and steam in thousands of manufacturing operations around the world.

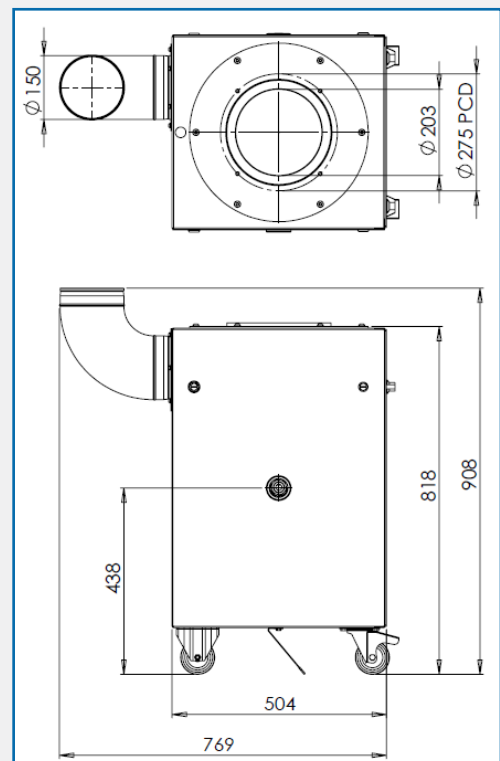
The Filtermist CSX is a low level combined stand incorporating an integral swarf separator.

Centrifugal force pushes oil to the unit's outer case where it can be reused or collected and clean air is returned to the workshop.

A combined stand that includes an inbuilt pre-separator ideal for heavy duty applications such as grinding machines. The stand benefits from large access doors to allow easy access for servicing and maintenance. The CSX stand comes complete with 4 locking castors, 90 degree inlet bend, pre-separator and 50mm diameter drain with tap.

NB: CSX is available for FX5002, FX6002 & FX7002 oil mist collectors only. Please contact us for more information.

DIMENSIONS



AES OFFER INSTALLATION AND SERVICE SUPPORT FOR ALL EQUIPMENT