

LABORATORY AUTOMATION & ROBOTIC SYSTEM ENCLOSURES



TECHNICAL SPECIFICATION

External Dimensions	
RO1500/01	1500 x 1180 x 2400mm
RO1800/01	1800 x 1180 x 2400mm
RO2200/01	2200 x 1180 x 2400mm
RO2600/01	2600 x 1180 x 2400mm
RO3200/01	3200 x 1180 x 2400mm
Internal Dimensions	
RO1500/01	1420 x 1000 x 1144
RO1800/01	1720 x 1000 x 1144
RO2200/01	2120 x 1000 x 1144
RO2600/01	2520 x 1000 x 1144
RO3200/01	3120 x 1000 x 1144

Face Velocity	0.4 m/s
Power Supply	230V, 50hz or 110V 60Hz
Filter Efficiency	Carbon - 99.9%
Sound Level	60 dBA
Filter Standard	British BS 7989:2001

DESCRIPTION

LAOP's high performance airflow system draws air through the HEPA and/or Chemcap carbon filtration system mounted in the roof of the enclosure. The enclosure is maintained at a slightly negative pressure with air entering the enclosure through slots at low level (>0.4m/s) and this protects the operators from aerosols and/or vapours such as solvents and DMSO released from the process. Used air is exhausted via outlet/exhaust filters back to the laboratory.

Access to the enclosure interior during operation can be gained through full height sliding or hinged doors allowing for access to the robotics system inside the enclosure during use, loading and maintenance. A control panel provides audible and visual alarm indication of low airflow.

Interlocking upper and lower main access doors are locked down with 'T' handles during operation. This enclosure's air flow is 100% pass through system, air in and air out.

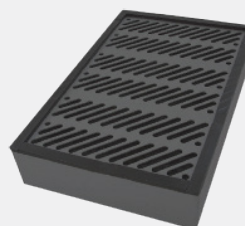
FEATURES

- Provides operator protection with doors closed and/or with doors open.
- Excellent all-round visibility of the enclosed system.
- Audible and visual alarm indication of low airflow
- Door open warning alarm.
- Display/Lighting Beacons show status of enclosed robotic system.

OPTIONAL EXTRAS

- Additional Electrical Sockets
- Carbon Filtration
- Computer shelf with flexible arm
- Leaded acrylic windows
- Storage and shelving to suit

FILTER TECHNOLOGY



- Chemcap Enviro Filter
- 99.9% efficiency for molecular weight equal to or greater than 30
- Eliminates toxic species and compounds

PART CODE/ORDERING TABLE

RO1500/01 - LAOP - 1500mm Wide	DF-FC10-XXX
RO1800/01 - LAOP - 1800mm Wide	DF-FC10-XXX
RO2200/01 - LAOP - 2200mm Wide	DF-FC10-XXX
RO2600/01 - LAOP - 2600mm Wide	DF-FC10-XXX
RO3200/01 - LAOP - 3200mm Wide	DF-FC10-XXX

AES OFFER INSTALLATION AND SERVICE SUPPORT FOR ALL EQUIPMENT