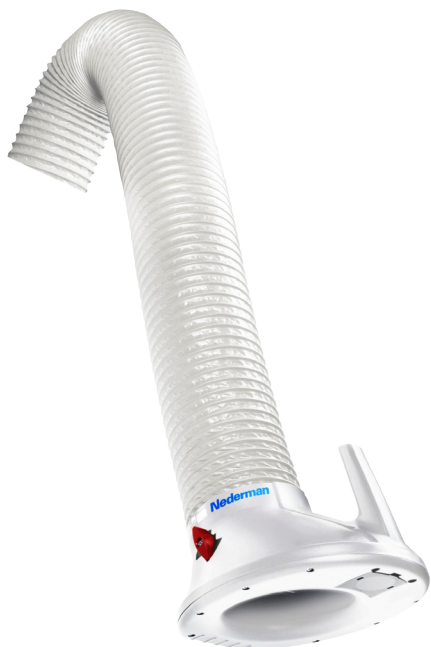
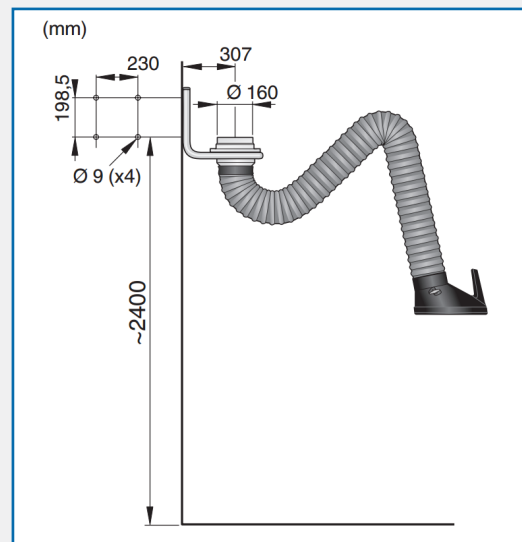


NEDERMAN ORIGINAL CR ARM



DIMENSIONS - MOUNTING

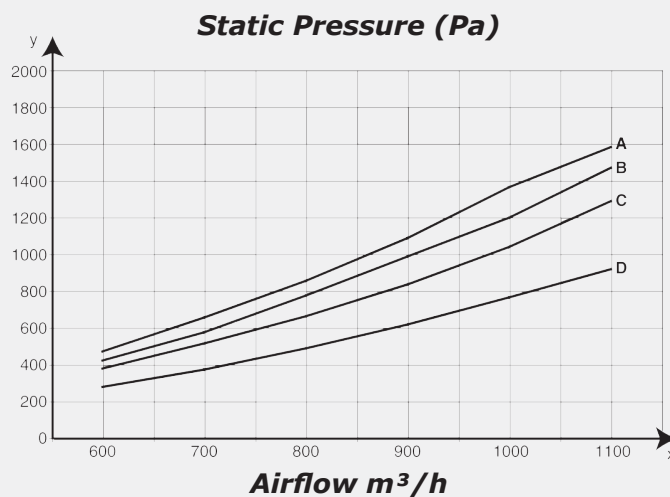


DESCRIPTION

It is specially designed for working environments with fumes, vapours or non explosive dust. Typical workplaces are the metal fabrication industry or other types of industries where extraction is needed. The applications can be welding, grinding, or other industrial processes where an easily positioned arm is required. The product is equipped with a damper in the hood as standard.

- Swivel allows the product to rotate 360 degrees
- The arm is flexible in all directions and simple to position
- The product can be mounted in combination with different brackets, extension arms, on exhaust rails or on fixed or mobile filter equipment
- The product is equipped with a damper in the hood as standard
- The hood on all models can be tilted in all directions

PRESSURE DROP GRAPH

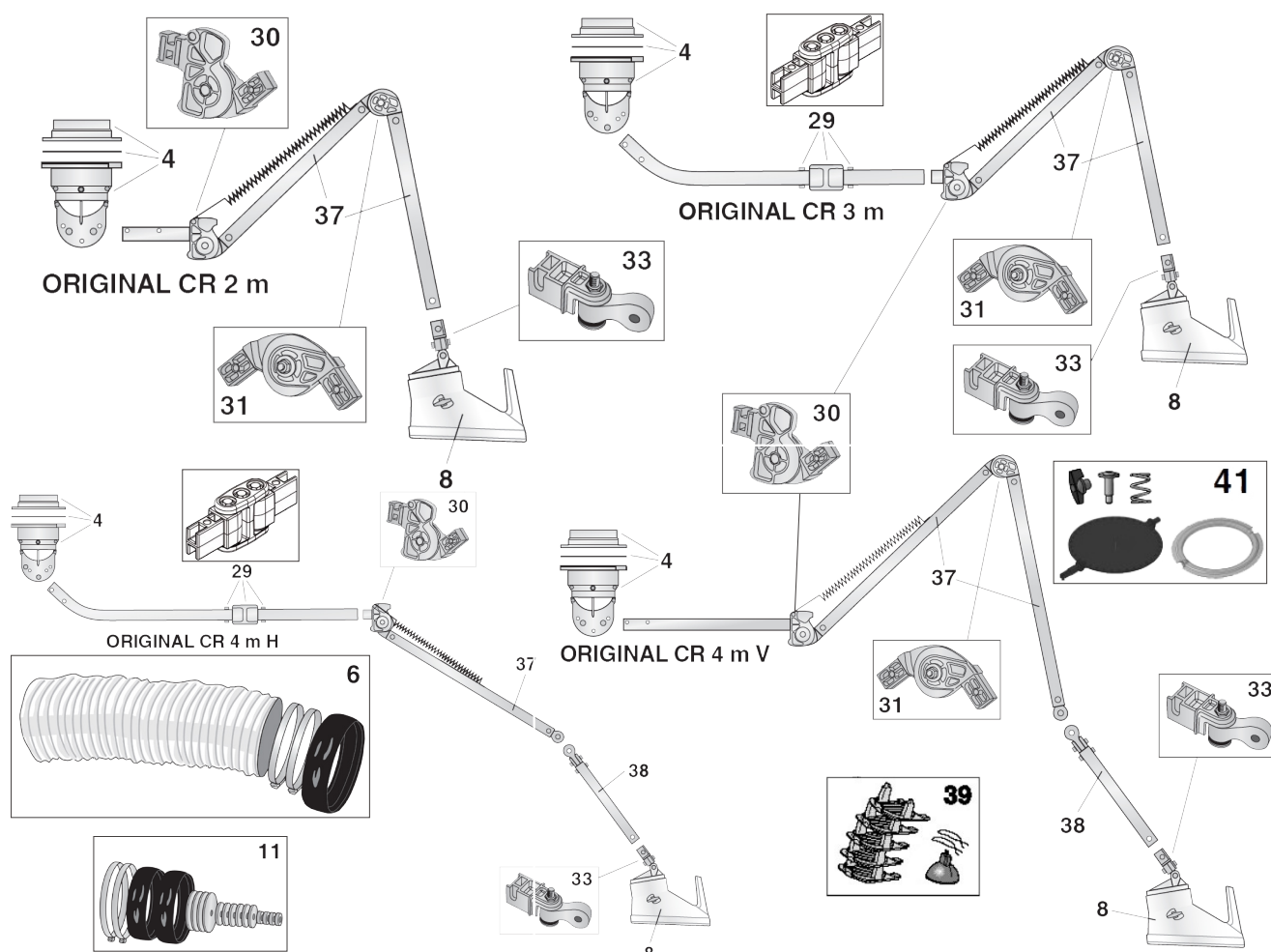


AES PART CODE/ORDERING TABLE

Part No.	Description	Reach (m)	Airflow, (m³/h)	Connection Ø (mm)	Max. Temperature	Noise Level at Hood (dB(A))	Weight (kg)	AES Part Code
10532535	Original Arm CR 2m	2	700-1000	150/160	70°C	63-75	11	DF-EA02-001
10532235	Original Arm CR 3m	3	700-1000	150/160	70°C	63-75	13	DF-EA02-002
10532335	Original Arm CR 4m - Vertical	4	700-1000	150/160	70°C	63-75	16	DF-EA02-003
10532435	Original Arm CR 4m - Horizontal	4	700-1000	150/160	70°C	63-75	16	DF-EA02-004

AES OFFER INSTALLATION AND SERVICE SUPPORT FOR ALL EQUIPMENT

NEDERMAN ORIGINAL CR ARM - Spare Parts



SPARE PART CODE/ORDERING TABLE

Reference	Description	Part No.
4	Swivel for Nederman Extractor Arm Original CR	10375013
6	PVC Hose - Ø160mm - 2m white c/w rubber ring & hose clamps	10371595
	PVC Hose - Ø160mm - 3m white c/w rubber ring & hose clamps	10371429
	PVC Hose - Ø160mm - 4.4m white c/w rubber ring & hose clamps	10332699
8	Hood for Original arm CR	10375014
11	Wear kit for Nederman Original Arms	10344540
29	Horizontal Arm Link for Nederman Original Arms	10321810
30	Inner link without moment setting for Nederman Original CR Arm	10375017
31	Knee link without moment setting for Nederman Original CR Arm	10375018
33	Link for Hood - Nederman Original CR Arm	10375019
37	Arm Center - Nederman Original 4m V CR Arm	10375020
38	Lower Arm Complete - Nederman Original 4m V & 4m H CR Arm	10375023
39	10 x lens, 1 x LED, Original/CR/MD	10376338
41	Damper Blade Kit	10376332
42	LED lamp for extraction arm, 20 pcs	10376902

AES OFFER INSTALLATION AND SERVICE SUPPORT FOR ALL EQUIPMENT