

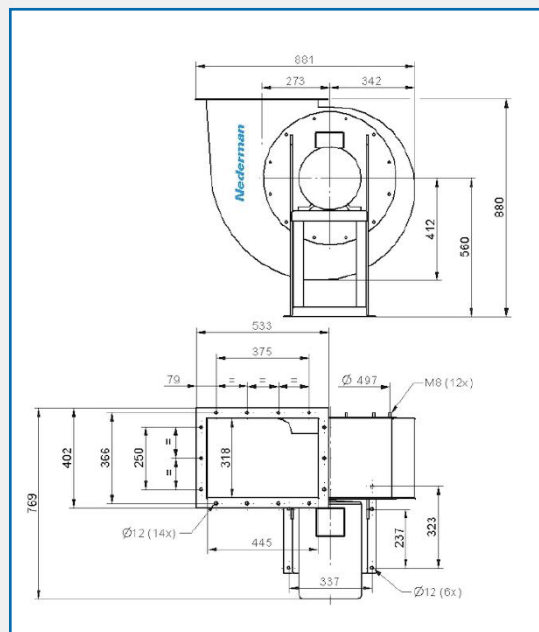
NEDERMAN NCF 120/15 FAN



TECHNICAL SPECIFICATION

Protection class	IP 55
Installation	(Indoor), (Outdoor)
Material	Sheet metal, painted grey, RAL 7045
Ambient temperature range	-30 to +40°C
Operating temperature	Max. 60°C
Frequency	50 Hz
No. of phases	3

DIMENSIONS DRAWING



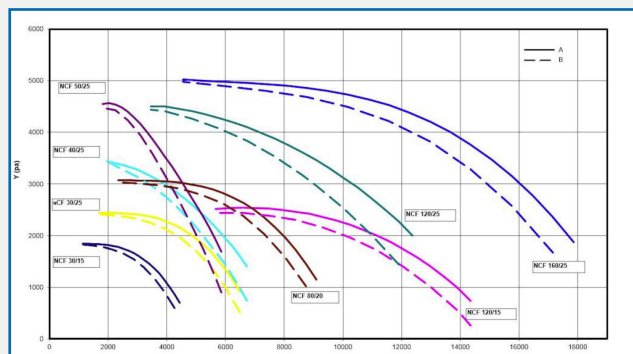
NCF 120/15
Duct inlet diameter 500 mm
Duct outlet diameter 500 mm

DESCRIPTION

The Nederman NCF Fans have direct drive motors which means a safe and cost effective operation. Installing an energy efficient NCF fan with our other Nederman products saves time and reduces energy costs.

It is a centrifugal fan designed for use in all types of industrial process and ventilation systems, mounted indoor as well as outdoor. The fan is equipped with vibration absorbers as standard.

PRESSURE DROP GRAPH



Y= Pressure drop
X= Air flow
A= Total pressure
B= Static pressure

PART CODES

Description	Power Voltage	Amperage
Fan NCF 120/15	230/400 V	24.0/13.8 A
Noise Level	Weight	Power
85 dB(A) at 10 000 m³/h	123 kg	7.5 kW
Model		
14550228		

AES OFFER INSTALLATION AND SERVICE SUPPORT FOR ALL EQUIPMENT